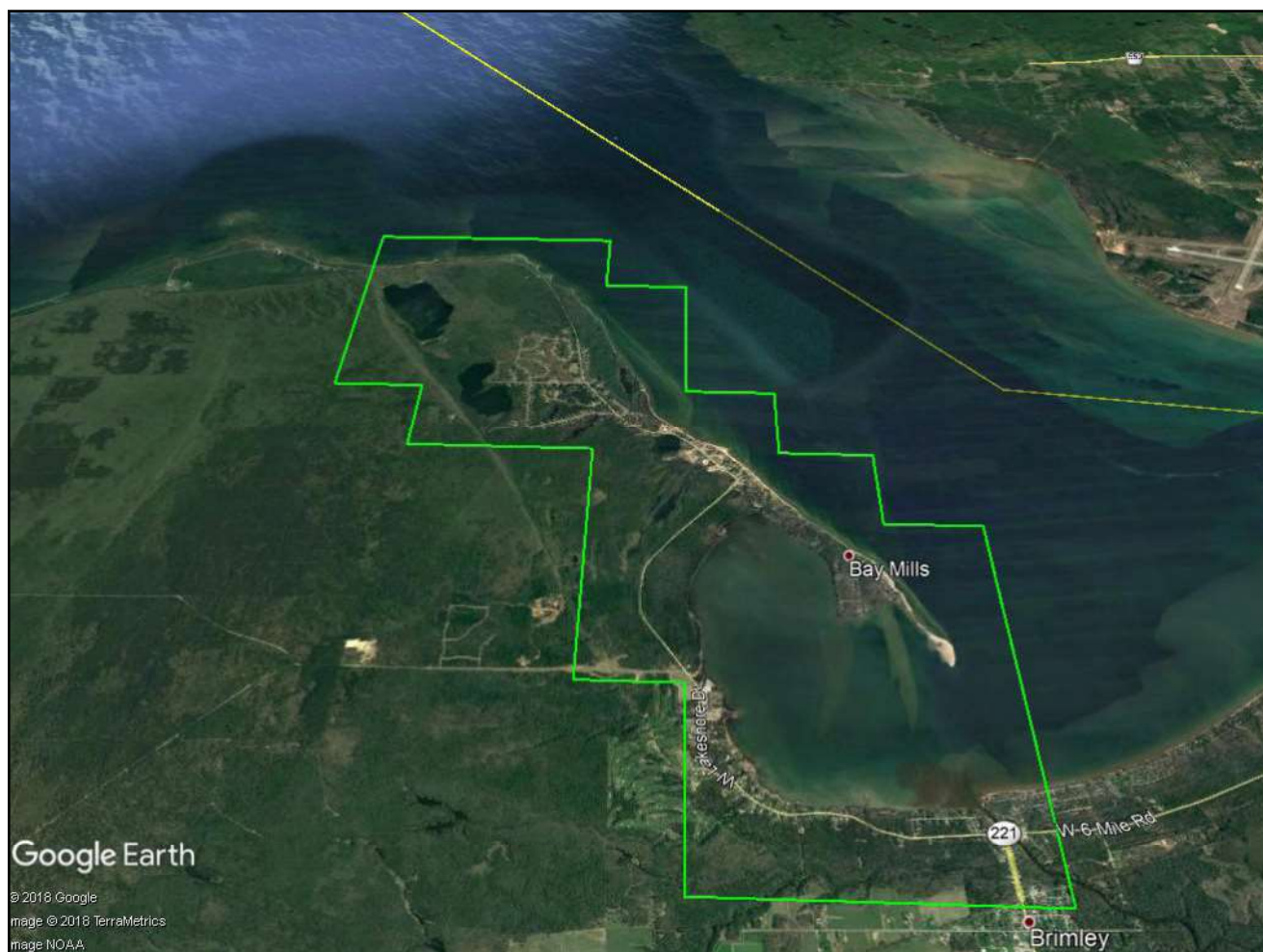


# 2018 Wild Rice Hyperspectral Data Collection



*Proposed area for data collection surrounded by green boundary*

## Eastern Upper Peninsula (Michigan)

Data collection area: About 32 square kilometers

Number of flightlines: 14

Flight altitude above ground level: 1,361 meters (4,665 feet)

# 2018 Wild Rice Hyperspectral Data Collection

---

## The Project

Six pilot sites across the Lake Superior basin have been chosen for the mapping and monitoring of manoomin. This is part of a much larger project with Lake Superior tribal partners and agencies focused on the restoration and protection of wild rice.

## The Data

Collection will include airborne hyperspectral imagery and field data, including GPS, photos, and spectral signatures of wild rice and other aquatic plant species. Hyperspectral imagery, also known as imaging spectroscopy, collects a large number of spectral bands throughout the electromagnetic spectrum. The larger number of bands helps in characterizing objects captured within the imagery.

## Timeline

Data collection is expected to begin mid-August and be completed by mid-September, depending on weather conditions. We will work with local partners to notify constituents when data collection will begin within each of the six pilot sites.

## Funding

Funding for this project work is being supported through the Fiscal Year 2017 Great Lakes Restoration Initiative funding.

## Partners

NOAA's Office for Coastal Management is working together with the Bureau of Indian Affairs and the following partners:

1854 Treaty Authority  
Bad River Band of Lake Superior Chippewa  
Bay Mills Indian Community  
Fond du Lac Band of Lake Superior Chippewa  
Grand Portage Band of Lake Superior Chippewa  
Great Lakes Indian Fish and Wildlife Commission  
Keweenaw Bay Indian Community  
Lac Courte Oreilles Band of Lake Superior Chippewa  
Lac du Flambeau Band of Lake Superior Chippewa  
Lac Vieux Desert Band of Lake Superior Chippewa  
Lake Superior National Estuarine Research Reserve  
Michigan Department of Environmental Quality  
Michigan Department of Natural Resources

Michigan Department of Transportation  
Minnesota Department of Natural Resources  
Minnesota's Lake Superior Coastal Program  
Red Cliff Band of Lake Superior Chippewa  
Sault Ste. Marie Tribe of Chippewa  
St. Croix Chippewa Indians of Wisconsin  
U.S. Environmental Protection Agency  
U.S. Fish and Wildlife Service  
U.S. Geological Survey  
Wisconsin Coastal Management Program  
Wisconsin Department of Natural Resources  
Tetra Tech and Galileo Group, Inc.  
(data collection contractors)

## For More Information

Brandon Krumwiede  
Great Lakes Geospatial Coordinator  
NOAA's Office for Coastal Management  
(952) 368-2513  
[Brandon.Krumwiede@noaa.gov](mailto:Brandon.Krumwiede@noaa.gov)

